

Technical specifications



**SKIDSTEER LOADERS HIGH FLOW
UP TO 150LPM**

**EXCAVATORS
6 - 8 T (13,200 - 17,600 Lbs)**

BACKHOES

**S5 AUGERS
150mm-1.2M (6 in. - 48 in.) Dia**

Torque Range: 2,717-8,152 Nm (2,004-6,012 ft-lb)

Oil Pressure Range: 80-240 Bar (1,160-3,481 psi)

Oil Flow Range: 70-150 lpm (19-40 gpm)

Speed Range: 33-70 rpm

Unit Weight: 116 kg (256 lbs)

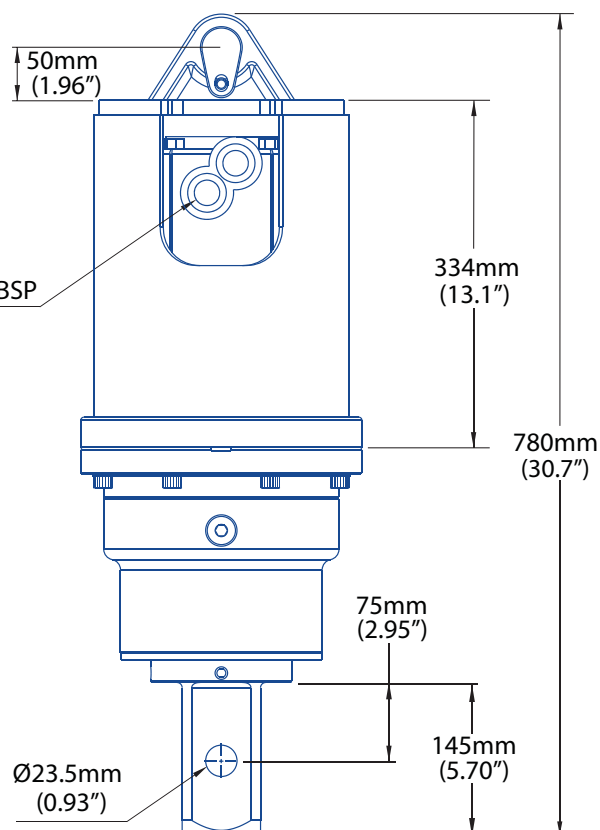
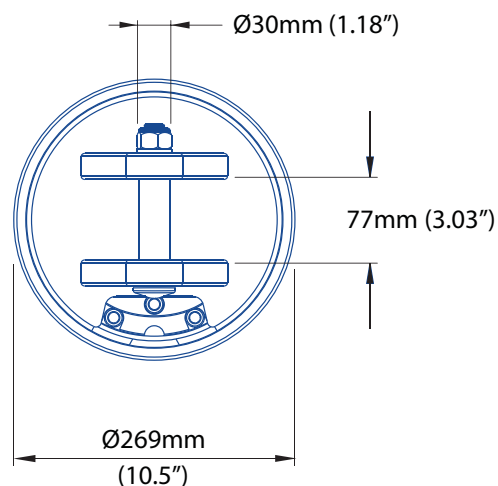
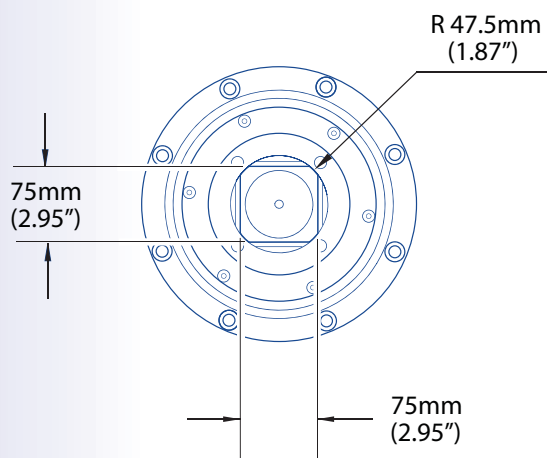
Hitch Options: Single Pin Hitch
Double Pin Hitch
Cradle Hitch

Optional Extras: 2 Way Valve

Output Shaft Std: 75mm (2.95") Square

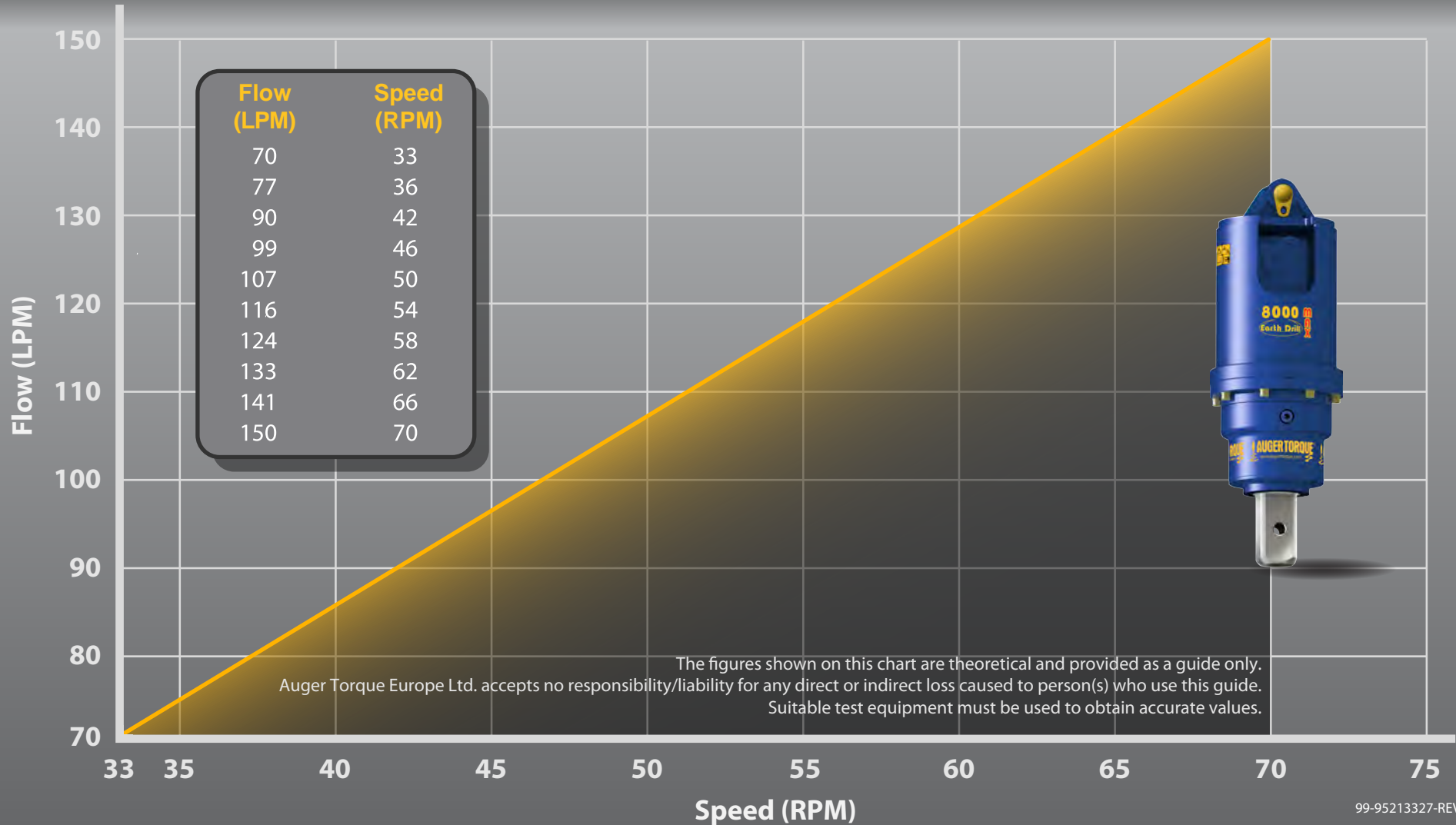
Output Shaft Opt: 2.5" (63.5mm) Hex

HOSE PORT \varnothing 3/4" BSP



8000MAX

Earth Drill Flow versus Speed Output



8000MAX

Earth Drill Pressure versus Torque Output

